



1250 Distribution Way, Vista CA 92081
Phone: 760-734-1749 Fax: 760-874-2973

H1 Bed Top Roll Cover Soft Top H1-EXT-360

To ensure a long life the finish must be washed and waxed every 30 days.

Item List:

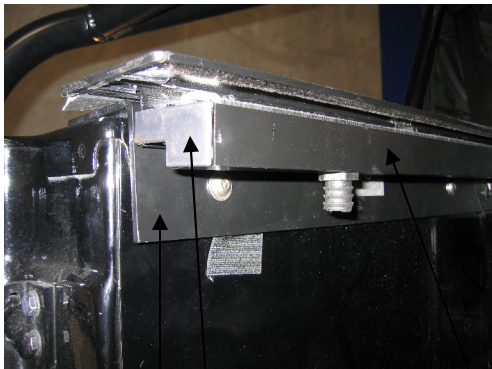
- 1- H1 Roll Top Bed Cover
- 1- Left Hand angle bracket
- 1- Right Hand angle bracket
- 1- Tailgate Bracket (long strip)
- 1- Left Hand Track
- 1- Right Hand Track
- 4- Stainless Steel 10-24 x1" Screws
- 12- Stainless Steel 5/16"x1 3/4" Allen Dome Bolts
- 12- Stainless Steel Nylock Nuts
- 24- Stainless Steel 5/16" Washers

Tools Needed for installation:

- Drill w/3/8" Drill Bit
- Assorted Allen Wrenches
- Assorted Wrenches
- Phillips Head Screwdriver
- 10-24 tap with drill bit

Installation:

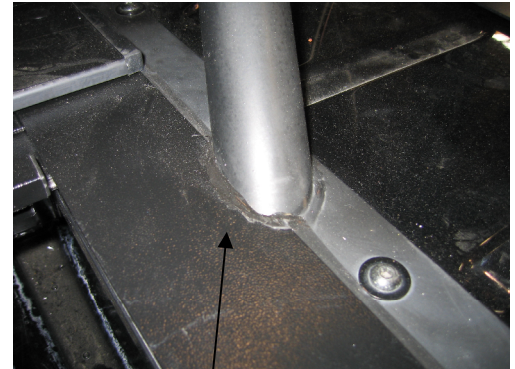
- 1- Set Canister in between fender wells and position to the front of bed. Center evenly between fender wells.
- 2- Remove the Phillips head screws located on the top of bed so that the rails sit evenly on corners of bed.
- 3- Set both, left and right angle brackets onto inside corners of fenders. Verify they are both placed as far forward to that they touch the roll bar rails and that they DO NOT extend past the bed. Close tailgate to ensure the angle brackets do not touch the tailgate.
- 4- Mark hole placement of angle brackets and drill through the bed in the marked locations with a 3/8" drill bit. Install Stainless Steel 5/16"x3/4" Dome bolts with washers and nylocks. Tighten evenly so that the angle brackets sit on the corner of the bed evenly.
- 5- Set rails on top of angle brackets and slide forward to canister. Mark location of impact on rails to the roll bar and notch rail lip.
- 6- With Rails set in place, mark hole placement of the two silver tabs located on the bottom of the rails and drill using a 3/8" Drill bit. Install 5/16" Stainless Steel Dome bolts with washers and nylocks and tighten into place. Make sure the rails are evenly spaced apart. Due to OEM specifications, the bed may not be even which would push the rails farther apart on the rear of the bed. In this case the rails will need to be shored using washers.
- 7- Use a black silicone sealer to seal around roll bars.
- 8- Snap in end caps into the back of the rails.
- 9- Pull bed top cover all the way out and lock. Close tailgate. Set the Tailgate Bracket onto top of tailgate. Mark hole location. Drill and tap the four holes to 10-24. Insert the stainless steel 10-24 screws through tailgate bracket and tighten in place.



Angle Bracket End Cap



Rail Canister



Rail Notch